

Test by: M&D Seed Research, LLC Van Buren, IN

## 2022 Corn Grain Top 30 Harvest Report

Michigan South [MISO] RIGA, MI  
Bill Bierman, Lenawee County, MI 49276

<b>Early-Season Test</b>	97 - 103 Day CRM B2022MISO01a
<b>Top 30 of 48</b>	For Gross Income (Sorted by Yield) Average of (4) Replications
<b>PREV. CROP/HERB:</b>	Soybeans / Roundup
<b>SOIL DESCRIPTION:</b>	Ziegenfuss clay loam, mod. poorly drained, non-irrigated
<b>SOIL CONDITION:</b>	No-Till, medium P, medium K, 5.7 pH, 3.3% OM, 17.8 CEC
<b>PEST MANAGEMENT:</b>	Lexar Ez
<b>FERTILITY - Applied N:</b>	90 Spring, 130 Sidedress
<b>Applied N-P-K (units):</b>	220-55-132
<b>SEDED - RATE - ROW:</b>	May 12 33.6 /A 30" spacing
<b>HARVESTED - STAND:</b>	Nov 8 33.0 /A

### TEST COMMENTS:

*This is another no-till site with good drainage and good fertility. The site planted well with above-average rains that caused good stands and lots of early-season growth. There was excellent pollination with deep kernels, which led to high yields. The corn was healthy at harvest and was standing well with drier-than-expected samples. Corn shelled great at harvest.*

Company/Brand	Product/Brand	Technol.†	RM	Yield Bu/A ↓	Moisture %	Lodging %	Stand (x 1000)	Gross Income \$/Acre	Rank
Dairyland	DS-4219AM ↗	AM	102	<b>240.3</b>	16.8	1	33.5	1610	1
Integra	5280 VT2PRIB ↗	VT2P	102	<b>239.1</b>	16.6	1	33.2	1603	2
Specialty	30DT192 ↗	TRE	100	<b>238.2</b>	16.5	1	33.5	1599	3
Legacy	LC-5319 ↗	STX	103	<b>236.1</b>	16.5	1	32.5	1584	4
FS InVision	FS 5098V RIB ↗	VT2P	100	<b>235.9</b>	16.5	1	31.8	1583	6
Dyna-Gro	D43VC81RIB ↗	VT2P	103	<b>235.9</b>	16.4	1	33.2	1584	5
Specialty	33D552 ↗	VT2P	103	<b>234.9</b>	16.8	1	33.2	1573	8
Wyckoff	2300 DGVT2P RIB ↗	VT2PDG	103	<b>234.7</b>	16.2	1	32.1	1578	7
M & W Seeds	MW 98A TRE ↗	TRE	98	234.1	16.3	1	33.2	1573	9
M & W Seeds	MW 103A VT2P ↗	VT2P	103	233.5	16.7	1	32.8	1564	10
Integra	4993 TRERIB ↗	TRE	99	232.2	16.2	1	33.2	1561	11
Renk	RK615SSTX ↗	STX	102	230.8	16.7	2	32.5	1547	12
Wyckoff	2170 TRE RIB ↗	TRE	98	229.9	16.4	1	32.8	1543	14
Augusta	A2050 VT2P ↗	VT2P	100	229.6	16.4	1	33.2	1542	15
Rob-See-Co	D01-90 ↗	VT2P	101	229.0	16.6	1	33.2	1536	16
FS InVision	FS 4715V RIB ↗	VT2P	97	228.5	16.3	1	32.8	1535	17
Dairyland	DS-4018AM ↗	AM	101	227.9	16.6	1	32.8	1528	19
Rob-See-Co	RC5134-PCE ↗	PC	101	227.6	16.3	2	33.5	1529	18
M & W Seeds	46T29 ↗	VT2P	99	227.3	16.4	2	33.2	1526	20
Wyckoff	2210 SS RIB ↗	STX	102	227.3	16.6	1	33.2	1524	22
Rob-See-Co	D98-43 ↗	TRE	98	227.2	16.3	1	33.5	1526	21
FS InVision	FS 4927T RIB ↗	TRE	99	226.7	16.3	1	32.8	1523	23
M & W Seeds	45V21 ↗	VT2P	103	226.2	16.5	1	32.8	1518	24
Wyckoff	2250 VT2P RIB ↗	VT2P	101	225.8	16.6	1	33.5	1514	25
Integra	5052 VT2PRIB ↗	VT2P	100	225.4	16.4	1	33.2	1513	26
Renk	RK579DGVT2P ↗	VT2PDG	99	225.3	16.6	1	32.5	1511	27
FS InVision	FS 5115X RIB ↗	STX	101	224.9	16.6	1	33.5	1508	28
Renk	RK600VT2P ↗	VT2P	100	224.3	16.5	1	33.2	1505	29
Dairyland	DS-3959Q ↗	QR	99	223.2	16.3	1	32.5	1499	30
Dairyland	DS-3900AM ↗	AM	99	222.8	16.8	2	33.2	1492	31
PIONEER	P0035AM CK	AM	100	230.3	16.7	1	33.5	1543	13
				<b>Averages =</b>	<b>224.3</b>	<b>16.5</b>	<b>1</b>	<b>33.0</b>	<b>1505</b>
				<b>LSD (0.10) =</b>	10.2	0.1	ns		
				<b>LSD (0.25) =</b>	5.3	0.1	ns		
				<b>C.V. =</b>	5.0				
				Historic yield: 189.34 bu/a, 13 yr(s)					

*Matt Turner*

Matt Turner

mattturner1979@yahoo.com, (317) 606-9040

**Yield & Income Factors:** Base Moisture = 15.5% Shrink = 1.3 Drying = \$0.04 Prices: GMO = \$6.75; non-GMO = \$6.75

Report Date: 11/09/2022

† See last page for abbreviation descriptions. Dark colored row identifies the check product found in early- and full-season tests. **Bold** yields are significantly above test average by LSD(0.10). **Italicized** brands exceed the grain moisture limit for this test. **ns** = column values not significantly different. ↗ Links to full product yield results at www.firstseedtests.com

©2022, All rights reserved by Elite Field Genetics, LLC

Additional reports available at [www.firstseedtests.com](http://www.firstseedtests.com)

Test by: M&D Seed Research, LLC Van Buren, IN

## 2022 Corn Grain Top 30 Harvest Report

Michigan South [MISO] RIGA, MI  
Bill Bierman, Lenawee County, MI 49276

<b>Full-Season Test</b>	104 - 107 Day CRM B2022MISO01b
<b>Top 30 of 36</b>	For Gross Income (Sorted by Yield) Average of (4) Replications
<b>PREV. CROP/HERB:</b>	Soybeans / Roundup
<b>SOIL DESCRIPTION:</b>	Ziegenfuss clay loam, mod. poorly drained, non-irrigated
<b>SOIL CONDITION:</b>	No-Till, medium P, medium K, 5.7 pH, 3.3% OM, 17.8 CEC
<b>PEST MANAGEMENT:</b>	Lexar Ez
<b>FERTILITY - Applied N:</b>	90 Spring, 130 Sidedress
<b>Applied N-P-K (units):</b>	220-55-132
<b>SEDED - RATE - ROW:</b>	May 12 33.6 /A 30" spacing
<b>HARVESTED - STAND:</b>	Nov 8 33.1 /A

### TEST COMMENTS:

*This is another no-till site with good drainage and good fertility. The site planted well with above-average rains that caused good stands and lots of early-season growth. There was excellent pollination with deep kernels, which led to high yields. The corn was healthy at harvest and was standing well with drier-than-expected samples. Corn shelled great at harvest.*

Company/Brand	Product/Brand	Technol.†	RM	Yield Bu/A ↓	Moisture %	Lodging %	Stand (x 1000)	Gross Income \$/Acre	Rank
Dairyland	DS-4510Q ↗	QR	105	<b>242.8</b>	16.5	1	33.5	1629	1
Wyckoff	2582 VT2P RIB ↗	VT2P	107	<b>241.5</b>	16.6	1	32.1	1619	2
FS InVision	FS 5525VDG RIB ↗	VT2P	105	238.5	15.9	1	33.5	1606	3
Integra	5533 STXRIB ↗	STX	105	237.6	16.5	1	33.2	1595	4
Augusta	A3655 VT2P ↗	VT2P	104	236.8	16.0	1	33.2	1593	6
Renk	RK625DGV2P ↗	VT2PDG	104	236.7	15.9	1	33.2	1594	5
Renk	RK715SSTX ↗	STX	105	236.3	16.5	1	33.5	1585	7
Wyckoff	2515 VT2P RIB ↗	VT2P	107	235.9	16.7	1	32.8	1581	8
Specialty	36D260 ↗	VT2P	106	235.4	16.6	1	32.8	1578	9
FS InVision	FS 5594X RIB ↗	STX	105	234.0	16.7	1	33.5	1568	11
Pioneer	P0720Q GC ↗	QR	107	233.8	16.8	1	33.5	1566	12
Wyckoff	2440 SS RIB ↗	STX	106	233.5	16.6	1	33.5	1566	13
M & W Seeds	44V42 ↗	VT2P	107	233.2	16.9	1	33.5	1561	16
Dairyland	DS-4567Q ↗	QR	105	233.0	16.7	1	33.5	1561	17
Legacy	LC554-21 ↗	VT2PDG	105	232.8	16.1	1	33.2	1566	14
Integra	5443 DGVT2PRIB ↗	VT2PDG	104	232.6	15.9	1	33.5	1566	15
Integra	5719 VT2PRIB ↗	VT2P	107	232.2	16.3	1	33.5	1560	18
Rob-See-Co	D05-16 ↗	VT2P	105	230.2	16.5	1	31.8	1545	19
Wyckoff	2483 VT2P RIB ↗	VT2P	105	229.9	16.4	1	33.5	1544	20
Renk	RK710DGV2P ↗	VT2PDG	107	229.6	16.5	1	32.8	1540	21
Specialty	37D832 ↗	VT2P	107	229.0	17.0	1	33.5	1532	23
Dyna-Gro	D47SS93 ↗	STX	107	228.6	16.2	1	33.5	1536	22
Rob-See-Co	RC5768-VT2P ↗	VT2P	107	227.7	16.7	1	33.5	1526	24
NK Brand	NK0696-D ↗	D	106	225.3	17.4	1	32.5	1504	26
Dyna-Gro	D44DC73RIB ↗	VT2PDG	104	224.9	16.0	1	32.8	1513	25
Augusta	A4759-3111 ↗	3111	109	223.3	16.5	1	33.2	1498	27
Legacy	LC541-22 ↗	STX	104	222.8	16.5	1	33.5	1495	28
Golden Harvest	G07G73-D ↗	D	107	221.8	16.8	1	32.1	1485	29
M & W Seeds	44V83 ↗	V	107	220.4	16.5	1	33.2	1479	30
Legacy	LC564-20 ↗	PC,E	106	213.3	16.2	1	31.8	1434	31
<b>PIONEER</b>	<b>P0035AM CK</b>	<b>AM</b>	<b>100</b>	<b>233.9</b>	<b>16.5</b>	<b>1</b>	<b>33.2</b>	<b>1570</b>	<b>10</b>
				<b>Averages =</b>	<b>227.9</b>	<b>16.5</b>	<b>1</b>	<b>33.1</b>	<b>1530</b>
				<b>LSD (0.10) =</b>	11.7	0.2	ns		
				<b>LSD (0.25) =</b>	6.1	0.1	ns		
				<b>C.V. =</b>	5.6				
				Historic yield: 189.34 bu/a, 13 yr(s)					

*Matt Turner*

Matt Turner

mattturner1979@yahoo.com, (317) 606-9040

**Yield & Income Factors:** Base Moisture = 15.5% Shrink = 1.3 Drying = \$0.04 Prices: GMO = \$6.75; non-GMO = \$6.75

Report Date: 11/09/2022

† See last page for abbreviation descriptions. Dark colored row identifies the check product found in early- and full-season tests. **Bold** yields are significantly above test average by LSD(0.10). **Italicized** brands exceed the grain moisture limit for this test. **ns** = column values not significantly different. ↗ Links to full product yield results at www.firstseedtests.com

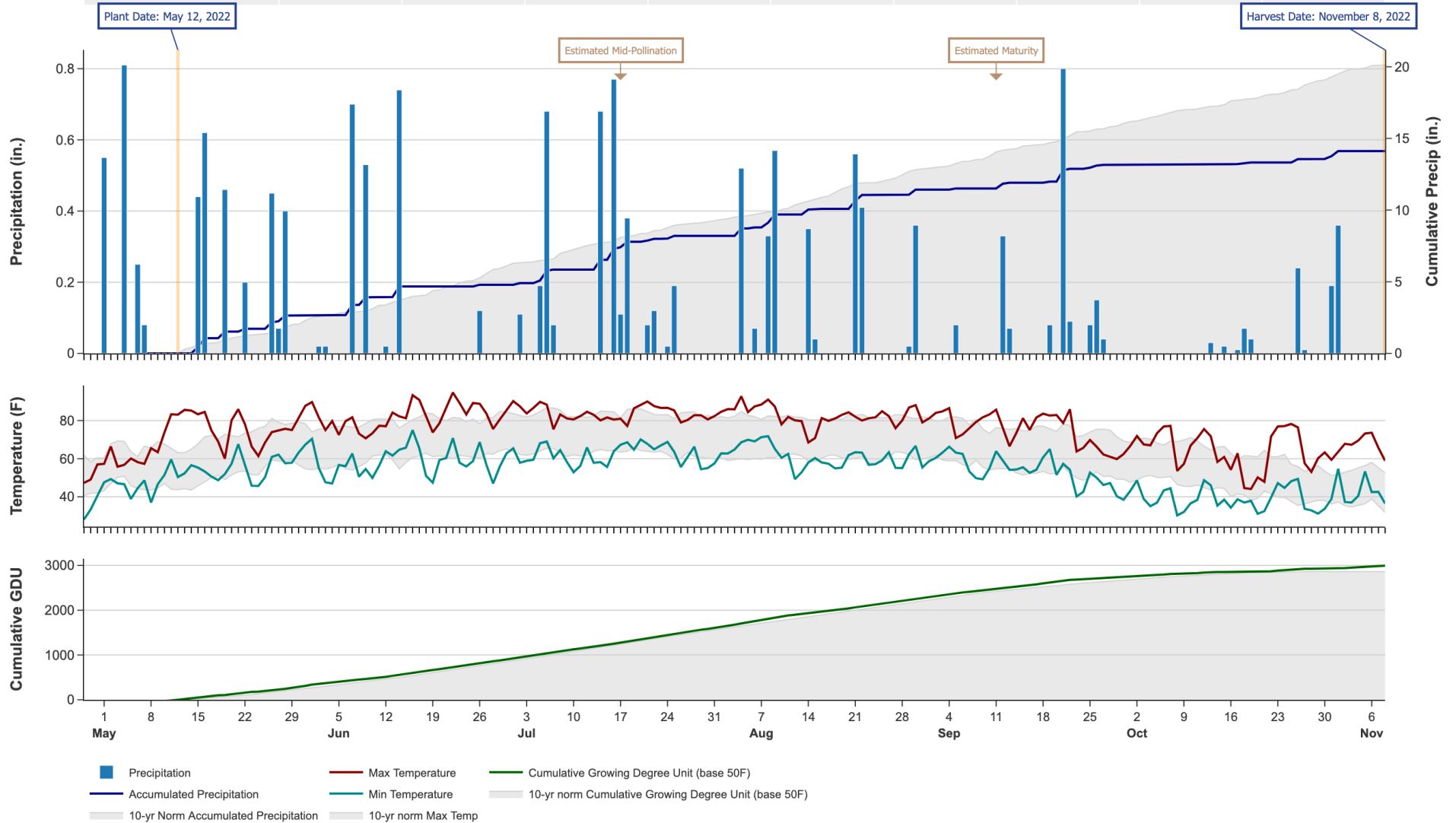
©2022, All rights reserved by Elite Field Genetics, LLC

Additional reports available at [www.firstseedtests.com](http://www.firstseedtests.com)

# 2022 Corn - Michigan South [ MISO ]

## Weather Conditions Summary at RIGA, MI

Monthly Total	Apr*	May	Jun	Jul	Aug	Sep	Oct	Nov*	Total
Precip (in)   Normal (Diff)	0.0   0.6 (-0.6)	4.3   3.9 (+0.5)	2.1   3.8 (-1.6)	3.4   3.2 (+0.2)	3.2   3.6 (-0.4)	1.7   3.2 (-1.5)	0.6   3.2 (-2.6)	0.4   0.9 (-0.5)	15.8   22.3 (-6.5)
GDU   Normal (Diff)	0   15 (-15)	401   353 (+47)	593   586 (+6)	699   719 (-20)	667   656 (+10)	465   457 (+7)	189   186 (+2)	69   0 (+69)	3083   2974 (+108)



\* First monthly total starts on the date 14 days prior to planting and final monthly total ends on the harvest date.

Note: Weather information from PRISM Climate Group. Data may be revised by the provider after retrieval. FIRST will not revise or update reports to reflect any weather data changes. For information purposes only.

## 2022 Corn - Michigan South [ MISO ]

### Early-Season Test Products (48 Total)

Company/Brand	Product/Brand	Technology	RIB	RM	Seed Treat.
Augusta	A2050 VT2P	VT2P	N	100	AC250
Augusta	A2150-5222-EZ	DV	Y	100	CM,C2,Vi
Augusta	A22-250	AA	Y	100	AC,P5
Dairyland	DS-3900AM	AM	Y	99	Lum, L1
Dairyland	DS-3959Q	QR	Y	99	Lum, L1
Dairyland	DS-4018AM	AM	Y	101	Lum, L1
Dairyland	DS-4219AM	AM	Y	102	Lum, L1
Dyna-Gro	D43VC81RIB	VT2P	N	103	AC,P5V
FS InVision	FS 4715V RIB	VT2P	Y	97	AC,P5V
FS InVision	FS 4927T RIB	TRE	Y	99	AC,P5V,EDC-EL
FS InVision	FS 5098V RIB	VT2P	Y	100	AC,P5V
FS InVision	FS 5115X RIB	STX	Y	101	AC,P5V
FS InVision	FS 5125L1A EZR	AA	Y	101	CM,C2,Vi
Golden Harvest	G02K39-D	D	Y	102	AVC,C2,Vi,Va
Golden Harvest	G99A37-DV	DV	Y	99	AVC,C2,Vi,Va
Integra	4993 TRERIB	TRE	N	99	AC,P5V
Integra	5052 VT2PRIB	VT2P	Y	100	AC,P5V,SU+Zn
Integra	5280 VT2PRIB	VT2P	Y	102	AC,P5V,SU+Zn
Legacy	LC-4248 SS	STX	Y	100	AC,P5V
Legacy	LC511-21	STX	Y	101	AC,P5V
Legacy	LC-5217 SS	STX	Y	102	AC,P5V
Legacy	LC-5319	STX	Y	103	AC,P5V
M & W Seeds	45V21	VT2P	Y	103	Ti
M & W Seeds	46T29	VT2P	Y	99	Ti
M & W Seeds	MW 103A VT2P	VT2P	Y	103	Ti
M & W Seeds	MW 97A VT2P	VT2P	Y	97	Ti
M & W Seeds	MW 98A TRE	TRE	Y	98	Ti
NK Brand	NK0007-AA	AA	Y	100	AVC,C2,Vi,Va
NK Brand	NK9922-DV	DV	Y	99	AVC,C2,Vi,Va
NK Brand	NK9991-D	D	Y	99	AVC,C2,Vi,Va
Partners Brand	PB7250 GC	DV	Y	102	AC,P2,St
Pioneer	P0035AM CK	AM	Y	100	Lum, L1
Renk	RK579DGV2P	VT2PDG	Y	99	AC,P2
Renk	RK597SSPRO	STXP	N	99	AC,P5V
Renk	RK600VT2P	VT2P	N	100	AC,P2
Renk	RK615SSTX	STX	Y	102	AC,P5V
Rob-See-Co	D01-90	VT2P	Y	101	AC,P2,Sb
Rob-See-Co	D98-43	TRE	Y	98	AC,P2,Sb
Rob-See-Co	D99-08	VT2P	Y	99	AC,P2,Sb
Rob-See-Co	RC5134-PCE	PC	N	101	AC,P2,Sb
Specialty	27D728	VT2P	Y	97	AC,P2V
Specialty	30DT192	TRE	Y	100	AC,P5V,EDC-B

Company/Brand	Brand/Product	Technology	RIB	RM	Seed Treat.
Specialty	33D552	VT2P	Y	103	AC,P5V,EDC-B
Wyckoff	2170 TRE RIB	TRE	Y	98	AC,P2
Wyckoff	2180 SS RIB	STX	Y	98	AC,P5V
Wyckoff	2210 SS RIB	STX	Y	102	AC,P5V,EDC-B
Wyckoff	2250 VT2P RIB	VT2P	Y	101	AC,P2
Wyckoff	2300 DGV2P RIB	VT2PDG	Y	103	AC,P2

\* FIRST does not inspect products for refuge blend. N\* indicates the product was entered without a refuge component by the sponsoring seed company. Prior year entries may contain refuge blend.

## 2022 Corn - Michigan South [ MISO ]

### Full-Season Test Products (36 Total)

Company/Brand	Product/Brand	Technology	RIB	RM	Seed Treat.
Augusta	A3655 VT2P	VT2P	N	104	AC250
Augusta	A4759-3111	3111	N	109	CM,C2,Vi
Dairyland	DS-4510Q	QR	Y	105	Lum, L1
Dairyland	DS-4567Q	QR	Y	105	Lum, L1
Dyna-Gro	D44DC73RIB	VT2PDG	Y	104	AC,P5V
Dyna-Gro	D47SS93	STX	N	107	AC,P5
FS InVision	FS 5525VDG RIB	VT2P	Y	105	AC,P2
FS InVision	FS 5594X RIB	STX	Y	105	AC,P5V
FS InVision	FS 5725X RIB	STX	Y	107	AC,P5V
Golden Harvest	G04S19-AT	AT	Y	104	AVC,C2,Vi,Va
Golden Harvest	G07G73-D	D	Y	107	AVC,C2,Vi,Va
Integra	5443 DGVT2PRIB	VT2PDG	N	104	AC,P5V
Integra	5533 STXRIB	STX	N	105	Treated
Integra	5719 VT2PRIB	VT2P	Y	107	AC,P5V,SU+Zn
Legacy	LC541-22	STX	Y	104	AC,P5V
Legacy	LC554-21	VT2PDG	N	105	AC,P5V
Legacy	LC564-20	PC,E	N	106	CM,C2,Vi
M & W Seeds	44V42	VT2P	Y	107	Ti
M & W Seeds	44V74	DV	Y	105	Ti
M & W Seeds	44V83	V	Y	107	Ti
NK Brand	NK0696-D	D	Y	106	AVC,C2,Vi,Va
Pioneer	P0035AM CK	AM	Y	100	Lum, L1
Pioneer	P0720Q GC	QR	Y	107	Lum
Renk	RK625DGVVT2P	VT2PDG	N	104	AC,P2
Renk	RK710DGVVT2P	VT2PDG	Y	107	AC,P2
Renk	RK715SSTX	STX	Y	105	AC,P5V
Rob-See-Co	D05-16	VT2P	Y	105	AC,P2,Sb
Rob-See-Co	RC5768-VT2P	VT2P	Y	107	AC,P2,Sb
Specialty	34D651	VT2P	Y	104	AC,P5V,EDC-B
Specialty	36D260	VT2P	Y	106	AC,P5V,EDC-B
Specialty	37D832	VT2P	Y	107	AC,P5V,EDC-B
Wyckoff	2335 SS RIB	STX	Y	104	AC,P5V
Wyckoff	2440 SS RIB	STX	Y	106	AC,P5V
Wyckoff	2483 VT2P RIB	VT2P	Y	105	AC,P2
Wyckoff	2515 VT2P RIB	VT2P	Y	107	CM,C2,Vi
Wyckoff	2582 VT2P RIB	VT2P	Y	107	AC,P5V

\* FIRST does not inspect products for refuge blend. N\* indicates the product was entered without a refuge component by the sponsoring seed company. Prior year entries may contain refuge blend.

## Footnotes and Abbreviations Descriptions

### Brand Footnotes

---

^	Innotech™ brand seed is distributed by Rob-See-Co, LLC. Power Plus® brand seed is distributed by Burrus. Innotech™ is a trademark of Syngenta. Power Plus® is a registered trademark of Corteva Agriscience.
CK	Identifies a check product included in early- and full-season tests.
GC	Grower Comparison product included by FIRST when space permits.

### Corn Technologies

---

3111	Agrisure® Viptera® 3111 (Vip,CB,RW,LL,GT)
AA	Agrisure® Above (CB,HX,LL,GT), formerly Agrisure® 3120
AM	Optimum® AcreMax®
AT	Agrisure® Total (CB,HXX,RW,LL,GT), formerly Agrisure® 3122
D	Duracade™ (CB,HX,RW,RW2,LL,GT), formerly Agrisure Duracade® 5122
DV	DuracadeViptera™ (Vip,CB,HX,RW,RW2,LL,GT), formerly Agrisure Duracade® 5222
E	Enlist™ (2,4-D, glyphosate, fop herbicide tolerance)
PC	PowerCore™
QR	Qrome™
STX	SmartStax®
STXP	SmartStax® Pro
TRE	Trecepta®
V	Viptera™ (Vip,CB,HX,LL,GT), formerly Agrisure Viptera® 3220
VT2P	VT Double PRO®
VT2PDG	VT Double PRO® DroughtGard®

---

NOTE: The refuge component genetics may vary in a refuge blend seed product.

## Corn Seed Treatments\*

---

NA	Not Available
AC250	Acceleron® 250
AC,P2	Acceleron® 250
AC,P2,Sb	Acceleron® 250, SabrEx Inoculant
AC,P2,St	Acceleron® 250, Stamina
AC,P2V	Acceleron® Poncho 250/Votivo
AC,P5	Acceleron® 500
AC,P5V	Acceleron® Poncho 500/Votivo
AC,P5V,EDC-B	Acceleron® BASIC Poncho 500/Votivo with Enhanced Disease Control
AC,P5V,EDC-EL	Acceleron® ELITE Poncho 500/Votivo with Enhanced Disease Control
AC,P5V,SU+Zn	Acceleron® Poncho 500/Votivo, StepUp SP, StepUp Zn
AVC,C2,Vi,Va	Avicta® Complete 250, Vibrance®, Vayantis®
CM,C2,Vi	CruiserMaxx® 250 with Vibrance
Lum	LumiGEN™ (Corteva Agriscience)
Lum, L1	(2022) LumiGEN, Lumisure 1250
Ti	Titan Corn 250 (M & W Seeds)
Treated	Treated seed, unspecified

---

\* Seed treatments may include unspecified plant health promoting components.